



5 October 2006

ASX Announcement

## LEGEND RETURNS TO THE PILBARA

**Legend Mining Limited (Legend) today announced the scheduling of four airborne electromagnetic surveys in the West Pilbara targeting copper-zinc and nickel deposits. Legend's land position and the planned survey areas are shown on the attached figure (Figure 1).** This work is to be conducted early next month and represents the return of Legend to exploration in the Pilbara.

Legend is currently working to expedite the grant of exploration licences, and will commence the drill testing of electromagnetic anomalies subject to the grant of title. Legend and Fox Resources Limited (Fox) independently control a dominant portion of this emerging and exciting base metal district.

The surveys are to be conducted using the helicopter-supported Versatile Time-Domain Electro Magnetic system (VTEM), which has an impressive track-record of mapping sulphide ore systems in the West Pilbara, including the West Whundo, Whundo and Ayshia deposits of Fox.

Brief descriptions of the four survey areas follow:-

- 1. NORTH WHUNDO** - 100% Legend  
Southern boundary of the survey area is located 2km north of the Ayshia deposit currently being evaluated by Fox. Whundo-type copper-zinc sulphide deposits are the principal target. Area: 55km<sup>2</sup>.
- 2. SHOLL** - 100% Legend  
Eastern boundary of the survey area is located 300m west of the Zodiac EM conductor recently identified by Fox using VTEM. Copper-zinc and nickel sulphide deposits are the principal targets. The area is known to contain at least one documented sulphide gossan assaying 0.1% copper. Area: 31km<sup>2</sup>.
- 3. DINGO** - 100% Legend  
Survey area centred on the Dingo mafic-ultramafic intrusive complex. Nickel-copper deposits at or near the basal contact are the principal target. Area: 23km<sup>2</sup>.
- 4. EAST RUTH WELL** - Legend earning 70% from Australian Nickel Mines NL  
Western boundary of the survey area is located 1.3km east of the Ruth Well nickel deposit. The geology is similar to the immediate Ruth Well area and nickel-copper deposits of the Ruth Well-type are the principal target. Area: 43km<sup>2</sup>.

## Background

Legend listed on the Australian Stock Exchange in 1995 and mined high-grade silver at Elizabeth Hill in the Pilbara up until 2000. Legend's current Pilbara project area lies between 7km and 50km south of Karratha (Figure 1).

Legend, and its wholly-owned subsidiary Armada Mining Limited (Armada), hold rights through granted tenements, tenement applications and joint venture agreements over 606km<sup>2</sup> of the Pilbara. A breakdown is given below:-

<b>Ownership</b>	<b>Area (km<sup>2</sup>)</b>
Legend and its wholly owned subsidiary Armada (100%)	447
Radio Hill JV: Armada earning 70% from Australian Nickel Mines NL.	141
Munni Munni JV: East Coast Minerals NL 70% - Legend 30%.	18
<b>TOTAL</b>	<b>606</b>

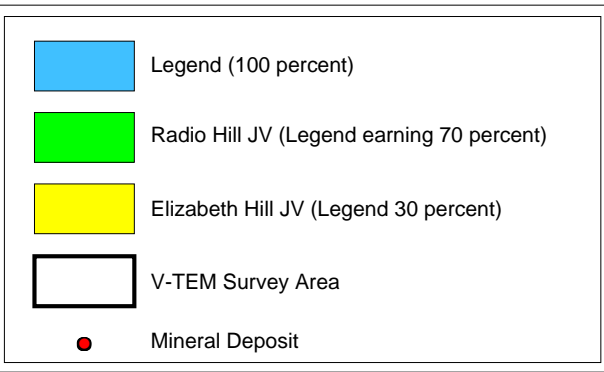
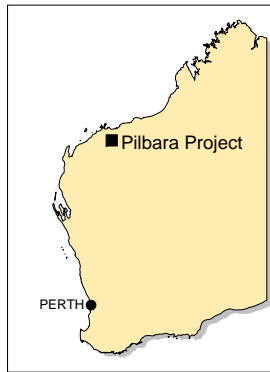
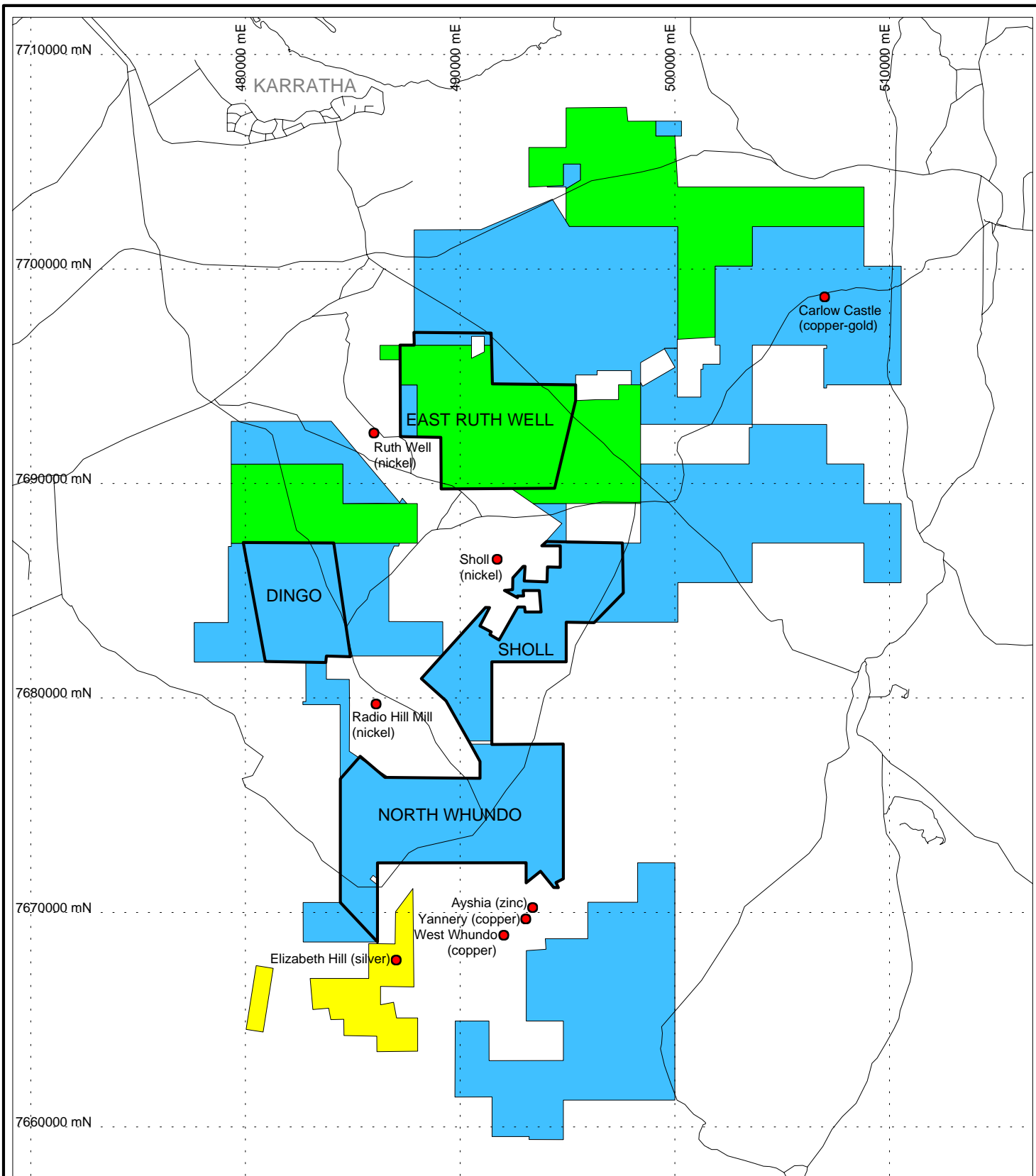
**For more information:**

Mr Mark Wilson  
Managing Director  
Legend Mining Limited  
Ph: (08) 9212 0600

Mr Bob Perring  
Technical Director  
Legend Mining Limited  
Ph: (08) 9212 0600

Visit: [www.legendmining.com.au](http://www.legendmining.com.au) to download a colour version of Figure 1.

*The information in this announcement that relates to Exploration Results has been reviewed by Mr Robert Perring, a Member of the Australian Institute of Geoscientists, whose services are provided by Quadramin. Mr Perring has sufficient relevant experience in the styles of mineralisation and types of deposit under consideration, and in the activity he is undertaking, to qualify as a Competent Person as defined in the 2004 Edition of the "Australian Code for Reporting of Exploration Results, Mineral Resources and Ore Reserves" (the JORC Code), and consents to the inclusion of the information in the form and context in which it appears.*



<b>LEGEND</b> <small>MINING LIMITED</small>	
<b>PILBARA PROJECT</b>	
<b>Figure 1</b>	
<b>PROJECT AREA</b>	
Author: RJP	Scale: 1:250,000
Date: 1 October 2006	Revised:
GDA 94 MGA Zone 50	